

NIGHT DEPOSITORY MODELS RND-C1 or C2
JND-C1 or C2
c/w CLEARING SAFE.

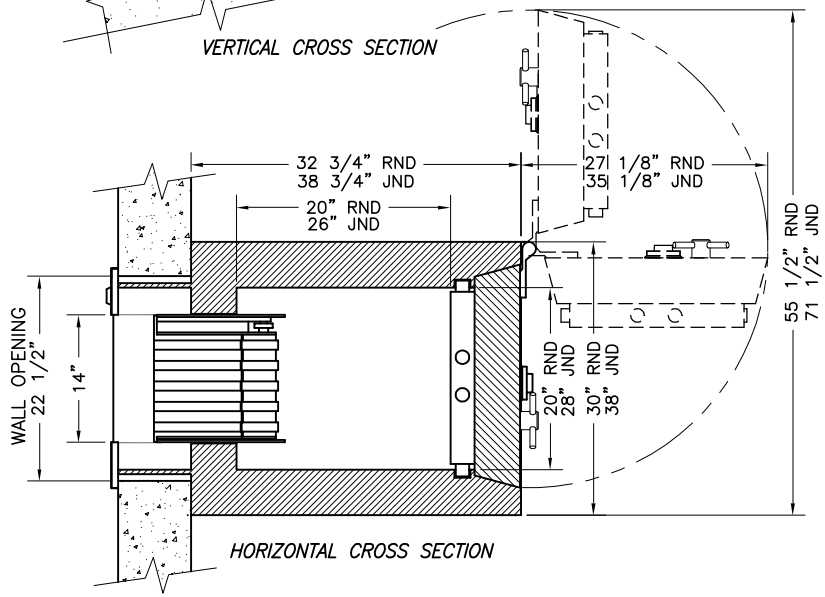
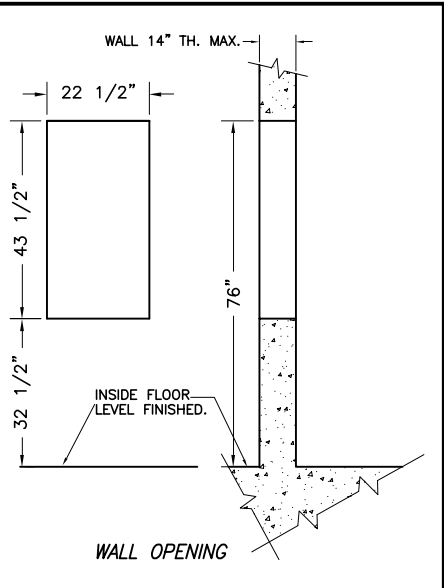
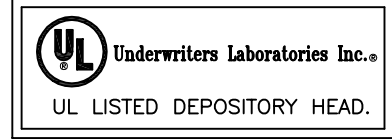
CHARACTERISTICS

- Unit for wallet deposits.
- The large capacity bag deposit compartment is exposed only when the required key has operated the lock in the depository frame.
- Anti-fishing device.
- Exterior fascia with stainless steel finish.
- Outside lighting system.
- The door and walls of receiving chest are 5" thick, steel & alloy.
- Door of receiving chest is equipped with 2-4 wheel combination locks GR 2M with spyproof dial.
- Contacts for installation of alarm hook-up.
- Additional alarm protection on fascia.
- ULC listed night depository head, (see DWG #PB-451).

OPTIONAL EQUIPMENT

- Pre-wiring two circuits for alarm system to protect body and door of the receiving chest.
- 2 or 3 movements timelock.
- Wallets & envelopes fonctions.
- Customer engraving on outside fascia.
- 2-4 wheel combination lock (indirect drive).
- Head trap #SDD-1, (see DWG #PB-482).
- Extra head keys.

MODELS	weight C1	weight C2	Cubic Capacity
RND 50 head keys	4100 lbs.	4400 lbs.	11.1
JND 100 head keys	5500 lbs.	5750 lbs.	20.2



6 SIDED TORCH & TOOL PROTECTION.



CLASS C1 (15 min.)
CLASS C2 (30 min.)

NO	DATE	REVISION	BY
4	09 06 05	DOOR SWING WAS MODIFIED.	RM
3	14 08 01	DOOR SWING ADDED	RM
2	14 08 01	2 locks GR2M was 2-4 wheel	RM
1	07 04 99	ADD. (PRE WIRING) OPT. EQU.	RM

		TITLE	
		NIGHT DEPOSITORY c/w CLEARING SAFE.	
DATE 24 09 98		APPLICATION	
		ULC #S330-93. CLASS C1 & C2.	
DRAWN BY		APP ED BY	
R M		SCALE	
PART NO		DRAWING NO	
		3/32 = 1	
		PB 592	